

MyCARE

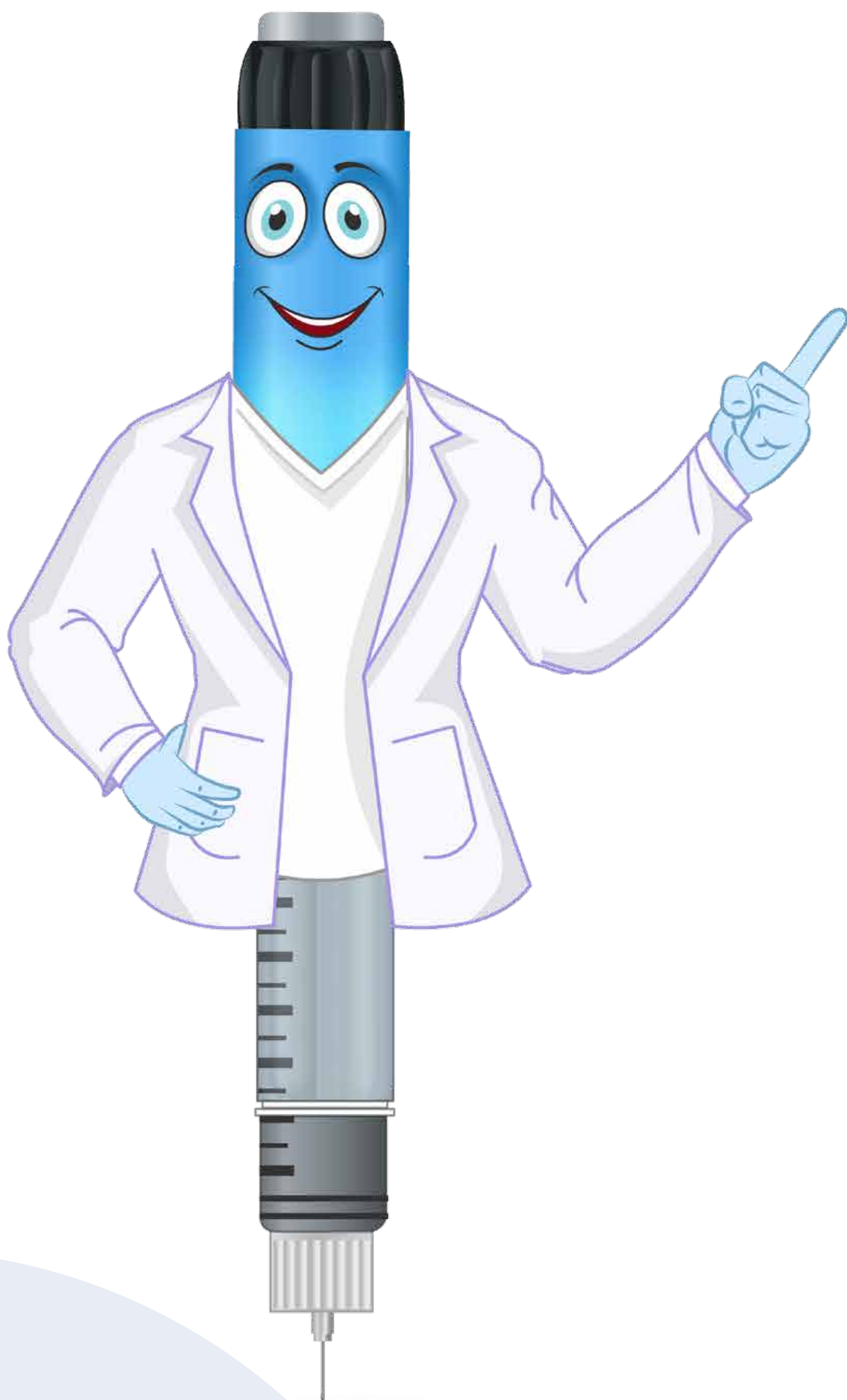
With me, every step of the way



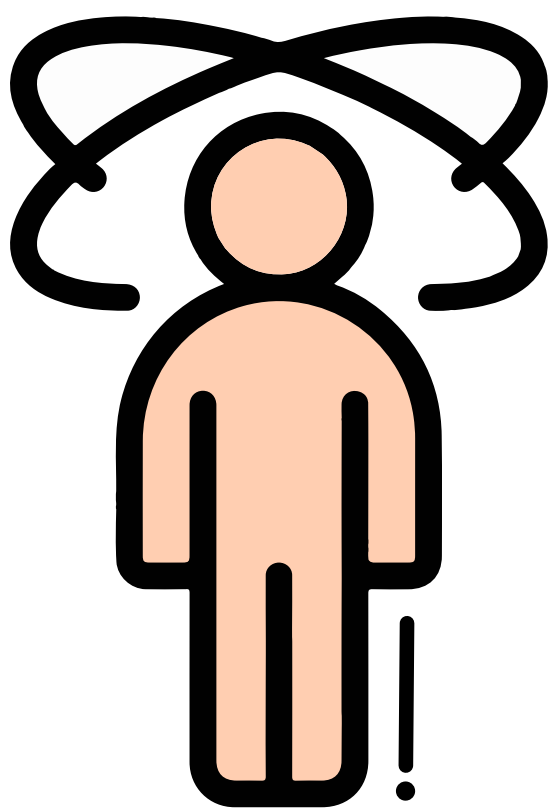
“ আপোনাৰ হাইপ’গ্লাইচেমিয়াৰ
লক্ষণ আৰু সংকেতসমূহ
জনাটো দৰকাৰী ”



যিহেতু হাইপ'গ্লাইচেমিয়াৰ প্ৰতি
প্ৰতিজন ব্যক্তিৰ প্ৰতিক্ৰিয়া পৃথক হয়



શુદ્ધ પ્રણ
મધ્યમીયા
લક્ષ્મ



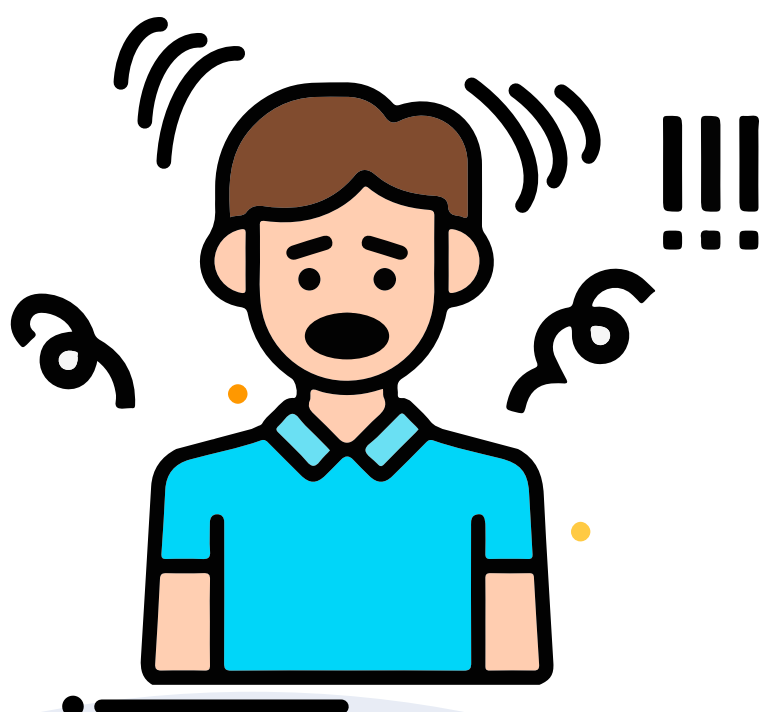
কঁপি থকা বা
জিটেৰী



ভোক লগা



ভাগৰুৱা



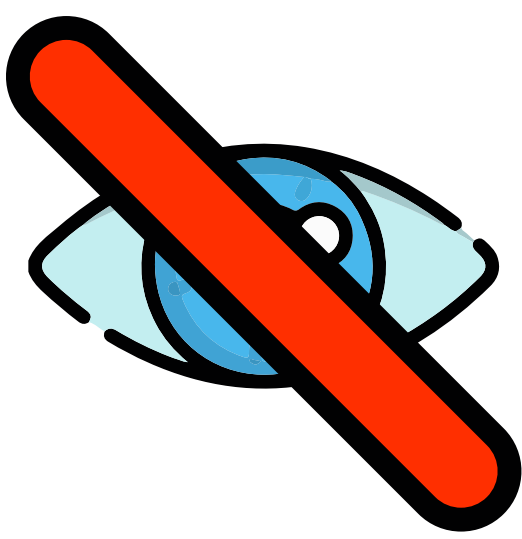
মূৰঘূৰণি, মূৰটো
পাতল লগা, বিভ্রান্ত
বা অস্বস্তিদায়ক



হৃদস্পন্দন অতি তীব্র হোৱা
বা স্থিৰে নথকা



মূৰৰ বিষ



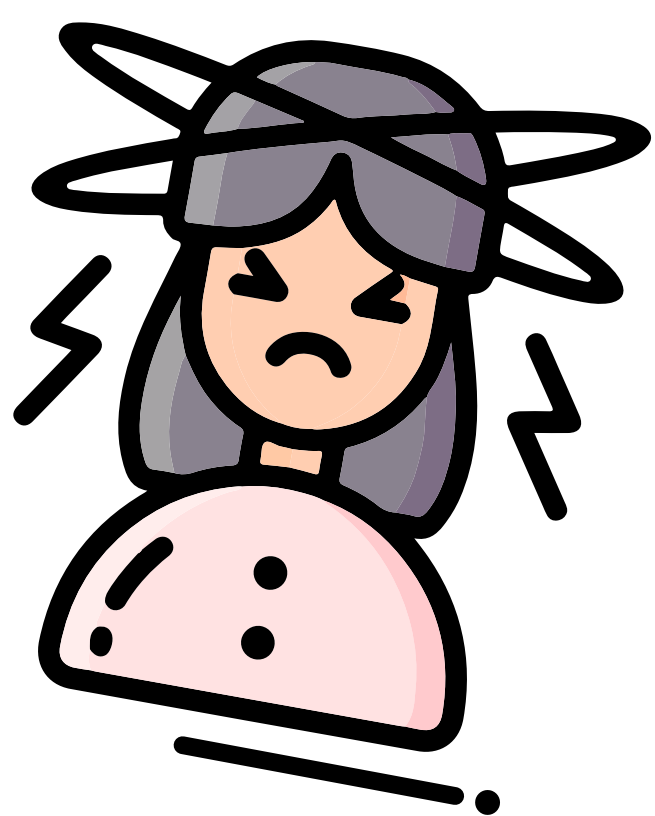
ভালদৰে



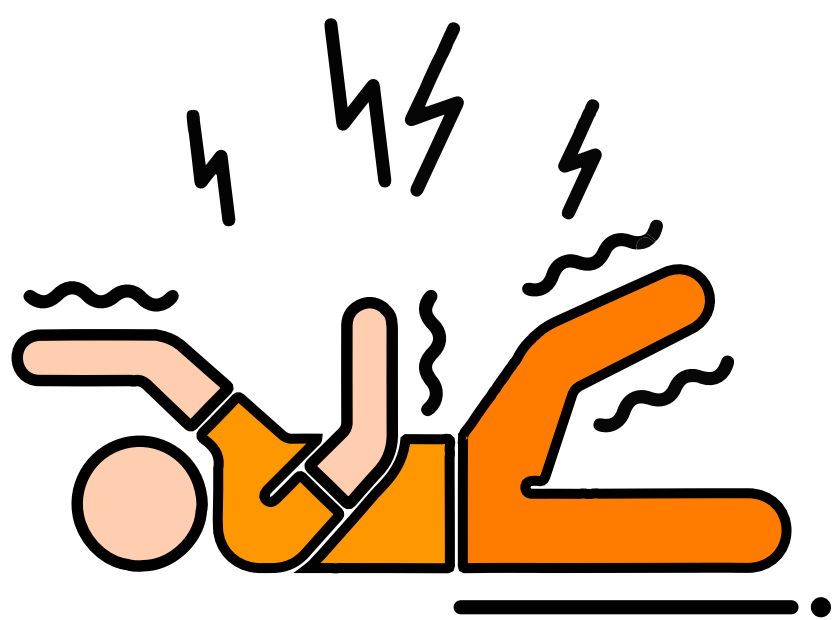
দেখা নোপোৱা বা কথা
ক'ব নোৱাৰা



ଓଁ ଲକ୍ଷ୍ମୀନାମସ୍ତୁତ



চেতনা হেৰুৱা



এক চিঁজাৰ থাকিলে

তীব্র হাইপ'গ্লাইচেমিয়া হ'ল
জীৱন-ভাবুকিস্বৰূপ আৰু ততালিকে
ইয়াৰ চিকিৎসা কৰিব লাগে



“ অধিক তথ্যৰ বাবে, আপোনাৰ চিকিৎসক
বা আপোনাৰ **MyCARE** ডায়েৰেটিজ
এডুকেটৰৰ লগত যোগাযোগ কৰক ”



MyCARE

With me, every step of the way

Reference

- National Institute of Diabetes, Digestive and Kidney Diseases. Low Blood Glucose (Hypoglycemia) | NIDDK. Available at <https://www.niddk.nih.gov/health-information/diabetes/overview/preventing-problems/low-blood-glucose-hypoglycemia>. Accessed 1st Dec 2021

Issued in Public Interest by



The guide/presentation/content/literature is for general information, guidance and educational purposes only and is not complete or exhaustive. The guide /presentation/content/literature is not intended or implied to replace or substitute any current practice and or advice/guidance/diet provided by healthcare professionals. This guide/presentation/content/literature does not constitute any treatment/therapy/medication/diet/opinions for any patients who are on diabetes medication, the patients are required to prior consult their healthcare professional before acting on any change on treatment/therapy/ medication/diet and/or opinions. USV Private Limited makes no representations as to accuracy, completeness, correctness, suitability or validity of any information contained in this guide/presentation/content/ literature and will not be liable for any losses, injuries or damages arising from its use.

